

FIXING INSTRUCTIONS - PROTECT TF INTERFOIL

FIXING PROTECT TF INTERFOIL WITH MINERAL WOOL

1. Infill timber studs with mineral wool insulation slab. Alternatively the insulation could be fitted between stages 5 and 6.
2. Place three translucent Cavit-E Trays over the insulation at the top, middle (over joint of two insulation slabs) and bottom between the timber studs and fix by way of stapling. This will create the required 20mm air cavity. If using mineral wool in roll form we recommend five trays per stud.
3. Roll out Protect TF InterFoil across the frame with the reflective surface facing into the air cavity created by the trays. Secure the membrane to the timber studs using austenitic stainless-steel staples at 500mm centres vertically and 600mm horizontally. Membrane overlap of 100mm required.
4. Fix OSB board.
5. Roll out Protect TF200 Thermo and fix as per Protect TF200 Thermo fixing instructions.
6. If required, fix Cavit-E Trays on the inside face of the insulant (warm side) as previously described and roll out TF InterFoil with the reflective surface facing into the air cavity and stapled onto the frame in accordance with the fixing process in (3).
7. Fit Protect VC Foil Ultra AVCL ensuring sealed laps with the reflective surface facing into a 25mm service void created by counter battening. Follow Protect VC Foil Ultra fixing instructions.

Alternatively, if Protect TF InterFoil is not used on the warm side of the insulation, Protect VC Foil Ultra can be stapled directly to the frame with the reflective surface facing into the air cavity created by the Cavit-E Trays or EPS ribs. As Protect VC Foil Ultra is an air and vapour control membrane ensure all laps are sealed. Follow Protect VC Foil Ultra fixing instructions.



1. Mineral wool insulation slab between studs.
2. Cavit-E Trays fitted at top, middle and bottom of each stud.
3. Protect TF InterFoil fitted with reflective face into the air cavity.
4. OSB board.
5. Protect TF200 Thermo.
6. If required, Cavit-E Trays on inside face of the insulation followed by Protect TF InterFoil facing into air cavity.
7. Protect VC Foil Ultra with sealed laps then counterbatten to create service void.

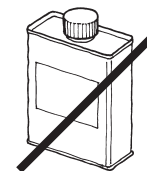
FIXING PROTECT TF INTERFOIL WITH RIBBED EPS INSULATION SLAB (JABLITE JTWS-TF EPS)

1. Infill timber studs with ribbed EPS insulation slab. Cut to ensure ribs are horizontal. Alternatively the insulation could be fitted between stages 5 and 6.
2. Roll out Protect TF InterFoil across the frame with the reflective surface facing into the air cavity created by the ribs on the EPS. Secure the membrane to the timber studs using austenitic stainless-steel staples at 500mm centres vertically and 600mm horizontally. Membrane overlap of 100mm required.
3. Fix OSB board.
4. Roll out Protect TF200 Thermo and fix as per Protect TF200 Thermo fixing instructions.
5. Roll out Protect TF InterFoil on the inside face of the insulant (warm side) as previously described with the reflective surface facing into the air cavity and stapled onto the frame in accordance with the fixing process in (2).
6. Fit Protect VC Foil Ultra AVCL ensuring sealed laps with the reflective surface facing into a 25mm service void created by counter battening. Follow Protect VC Foil Ultra fixing instructions.

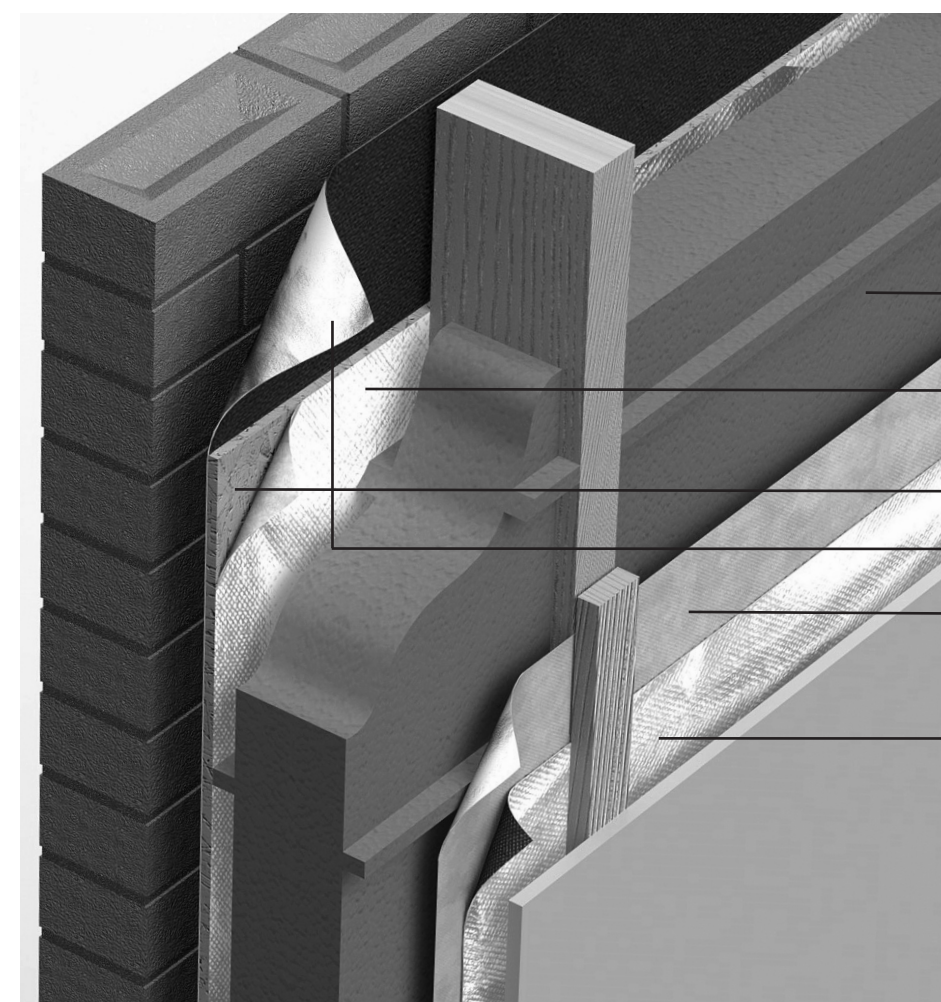
GENERAL

Protect TF InterFoil must not be exposed to continuous working temperatures in excess of 80°C, such as in direct contact with hot pipes, flues or electric heating cables.

No maintenance of Protect TF InterFoil is necessary once installed but it is important that the surface of the product remains clean during the installation process otherwise the thermal performance may be impaired.



Do not use in direct contact with organic solvents



1. Ribbed EPS insulation slab between studs.
2. Protect TF InterFoil fitted with reflective face into the air cavity.
3. OSB board.
4. Protect TF200 Thermo.
5. If required, Protect TF InterFoil on the inside of the insulation facing into the cavity.
6. Protect VC Foil Ultra.

Other products purchased with this membrane:

Cavit-E Tray, Protect TF200 Thermo and Protect VC Foil Ultra.



For technical advice telephone
+44 (0)161 905 5700