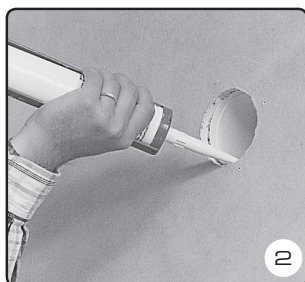


Use a core drill with min. dimension Ø86mm for Fresh 80 and Ø 150mm for Fresh 80dB. Drill from inside to outside. Drill the hole so that the pipe slopes slightly downwards.

Fresh 80: With wall thickness larger than 360mm, additional telescopic pipe can be used (accessory). If the wall thickness is less than 300mm the pipe can be cut to required length.



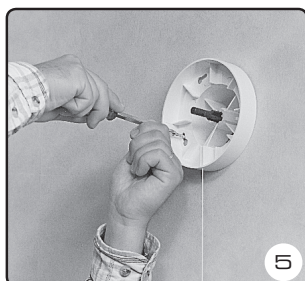
Mount the pipe and seal against the wall, both inside and outside, with for example a sealing agent.



Nail or screw the outside grille into place.



Open the front cover. Press the cover inwards and turn it clockwise. Remove the filter holder and filter.

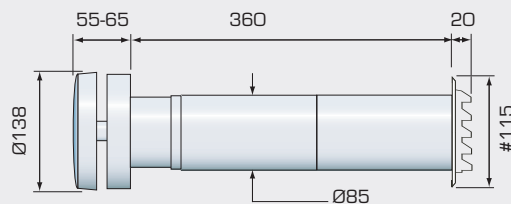


Place the internal part on the wall with 4 screws.



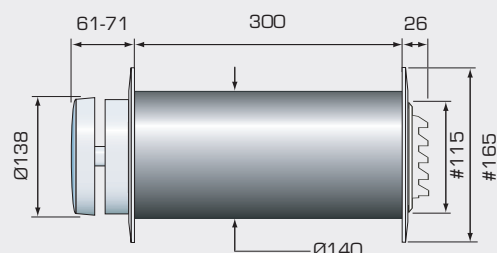
Install the filter and filter holder. Press the cover inwards and turn it anti-clockwise. The vent is now completely installed.

Fresh 80



Maximum wall thickness 360 mm (standard).
Hole-punching Ø86 mm.

Fresh 80-dB



Maximum wall thickness 300mm (standard).
Hole-punching Ø150mm.
Internal cover plate #165 as standard.

Placement

As high as possible on the wall, at least 10cm below the ceiling.

Above or in direct connection with a window or a radiator. In connection with floor heating the vent is placed at least 1 m away from the window and should be supplemented with an air-flow director (accessory).

Avoid drilling holes in studs and in proximity to electric wiring and water pipes.

When installing in existing ventilation duct, cover plates #165 or #210mm are available as accessories.

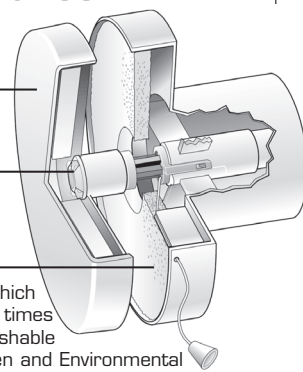
Maintenance

Front cover insulated from condensation and sound penetration.

A calibration screw for infinitely variable adjustment of an air gap, 0-17 mm.

Dust and insect filter supplied as a standard feature. Other filters available as accessories.

The internal part contain a filter which ought to be washed/replaced 1-2 times per year. The Standard filter is washable (use a gentle detergent). The Pollen and Environmental filter should be replaced with a new one. Place the internal part in an open position. Push the vent inwards and turn clockwise. Pull out the front cover and filter holder – the filter is now within reach. The vent should be open and shut at least once every 6 months.





Use a core drill with min. dimension Ø102mm for Fresh 90 and Ø 150mm for Fresh 90dB. Drill from inside to outside. Drill the hole so that the pipe slopes slightly downwards.

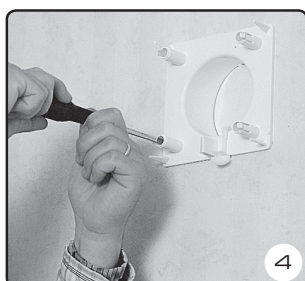
Fresh 90: With wall thickness larger than 360mm, additional telescopic pipe can be used (accessory). If the wall thickness is less than 300mm the pipe can be cut to required length.



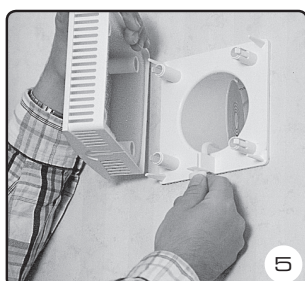
Mount the pipe and seal against the wall, both inside and outside, with for example a sealing agent.



Nail or screw the outside grille into place.



Attach the internal vent housing with 4 screws.



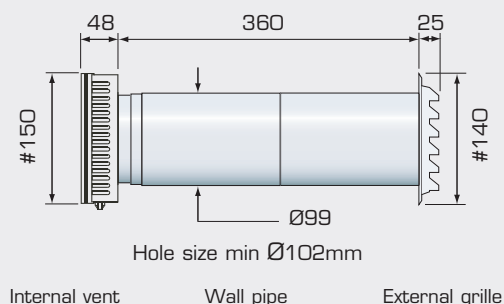
Place the internal butterfly vent arm in the slot.



Attach the front cover.
The vent is now completely installed.

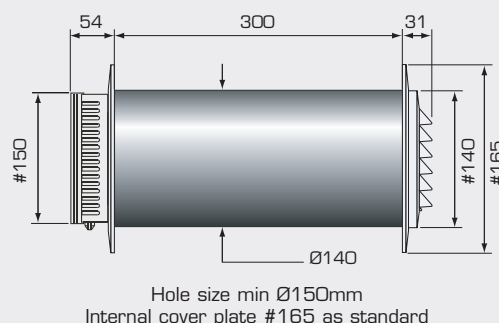
Fresh 90

Max. wall thickness (standard)



Fresh 90-dB

Max. wall thickness



Placement

As high as possible on the wall, at least 10cm below the ceiling.

Above or in direct connection with a window or a radiator.

Avoid drilling holes in studs and in proximity to electric wiring and water pipes.

When installing in existing ventilation duct, cover plates #165 or #210mm are available as accessories.

Maintenance

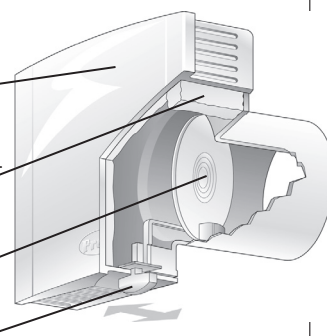
Front cover insulated from condensation and sound penetration.

Dust and insect filter supplied as a standard feature. Other filters available as accessories.

Stopper which is easily removed if a minimum flow is required.

Damper control for unlimited adjustment of airflow.

The filter ought to be washed/replaced 1-2 times per year. The Standard filter is washable (use a gentle detergent). The Pollen and Environmental filter should be replaced with a new one. The filter is placed in the front cover, which is easily removed.



FIXING INSTRUCTIONS

FRESH 99H/99HdB WALL VENT

Hole sizes

Fresh 99 H 101mm (minimum)

Fresh 99HdB 145mm (minimum)

Recommended installation height is 1.7m above floor level to allow incoming cold air to mix with room air and avoid direct draught. Site either in corners of rooms to avoid stagnant air pockets, or above radiators to avoid convection and air mixing. Ventilators can be installed in solid or cavity walls. Fix with a slight downward tilt to the outside to ensure condensation and rainwater will not run into the building. Cut a suitable hole for the circular wall sleeve using a core drill. Cut wall sleeve to the correct length, reassemble, insert through wall and push fit outside grille. Apply mastic to the rim of the external and internal mounting plates to form a seal. Where using an acoustic sleeve, apply mastic to the back of the wall plates and the acoustic sleeve to ensure an airtight joint. It is recommended that a cavity tray should be provided above the ventilator where the wall cavity is bridged.

Shortening

Fresh 99H

Cut the vent tube to the required length. The vent can be adapted to walls up to a maximum 350mm thick. Extension tubes are available for thicker walls.

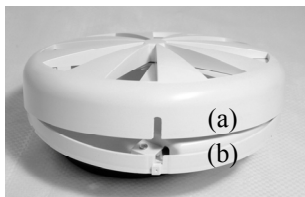
Fresh 99HdB

Cut the sleeve to the wall thickness. The acoustic sleeve is easy to cut using a knife or saw. Longer sleeves can be made to order.

Installation

Inside vent

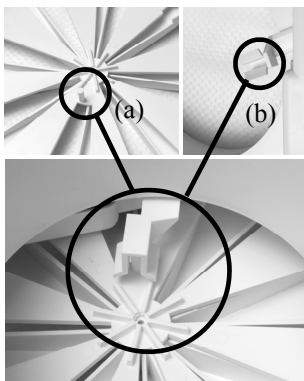
- 1 Remove the fascia from the base unit of the extract by gently pulling the front fascia (a) from the base unit (b).



- 2 To install, screw the base unit of the internal grille to the wall using 3 No 4mm diameter self-tapping screws through the holes provided on the plate.



- 3 Align the fascia notch (a) on the back of the fascia, with the base unit control arm (b). This ensures that the humidity sensor controls the opening and closing of the grille.



- 4 Once in place, locate the fascia over the base unit ensuring that the placement lug of the back plate (a) lines up with the receptor void on the perimeter of the fascia (b).



- 5 Once located, gently push-fit together until the two parts click into place.



Outside grille

Mount the grille using 4 screws in 4 No 4mm diameter, holes.

Operation

The **Fresh 99H/99HdB** is fitted with an automatic humidity controlled grille which opens and closes in response to changes in relative humidity to ensure the ventilation rate is at the required level to continuously combat moisture and condensation. At low levels of relative humidity, the extract never fully closes, providing a low level of background ventilation to ensure continuous ventilation.

Maintenance

The **Fresh 99H/99HdB** internal grille should be cleaned periodically in order to maintain its performance. Referring back to the installation process, remove the cover from the base. Clean the cover, rotating flange and nylon strands with soapy water. Rinse and dry thoroughly.

GLIDEVALE

2 Brooklands Road, Sale, Cheshire, M33 3SS

Telephone: (+44) 0161 905 5700

Fax: (+44) 0161 905 2085

Web: www.glidevale.com

Email: info@glidevale.com



A division of Building Product Design Ltd. Company Registration No: 3944123

Fresh TL-F

Installation instructions

Description

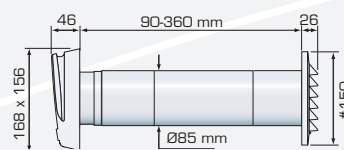
Air supply vent designed for mounting in bedrooms, livingrooms etc.
The vent contain internal part (supplied with damper and filter), wall pipes and external grille.
The variable precision damper is adjustable by a regulator located underneath the vent.

Sound-reducing vent

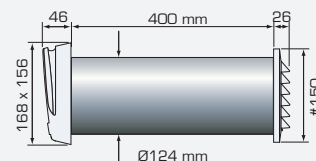
The sound-reducing vent has another wall pipe than the standard vent. Besides the dB-pipe each set contain two cover plates and two short adapters. The standard length is 400mm but the dB-pipe can easily be cut to requested lenght.

A minimum air-flow with approx. 3 l/s at 10 Pa is standard (in-built minimum-flow stopper). If requested the vent can also be completely shut by pressing the regulator a bit harder towards shut position.

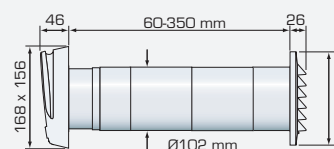
Measurement TL80F



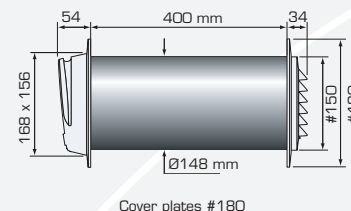
Measurement TL80F-dBS



Measurement TL98F



Measurement TL80F-dB, TL98F-dB



Cover plates #180

1

Holesize

| Model | Ø mm |
|--------------|------|
| TL80F | Ø86 |
| TL98F | Ø105 |
| TL80F-dBS | Ø125 |
| TL80F/98F-dB | Ø150 |



2

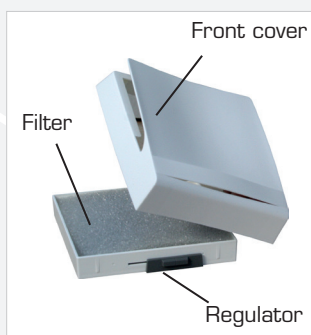


3



Maintenance

It is important to keep the filter clean in order to ensure correct airflow (wash/replace the filter 1-2 times/year).
The filter is easy to clean/replace. Pull the front cover straight outwards, the filter is now visible.



Mounting

A high placing of the vent is recommended and preferably near a radiator.

1. Making the hole

Drill a hole through the wall (see chart for dimension) with a slight slope outwards.

2. Mounting the external grille

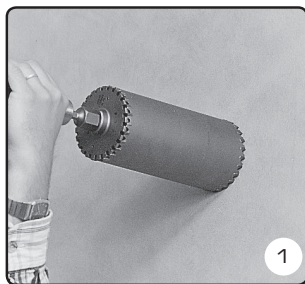
Press the external adapter on to the external grille.
Mount as many wall pipes it takes for the wall inlet to be barely covered.
Place the external grille with adapter and the mounted wall pipes through the wall from the outside. Screw the external grille into place with 4 screws.
When necessary seal against the wall with for example sealing agent.
At weatherexposed areas replace the external grille with a storm cover or complement the grille with a rain cover.

3. Mounting the internal part

Loosen the front cover and filter from the vent housing.
Press the internal adapter onto the backside of the vent housing.
Seal the outer part of the adapter with for example sealing agent (in order to get a tight connection to the wall pipes) and place the internal part on the wall with screws.
Set requested opening with the regulator, reinstall the filter and front cover.

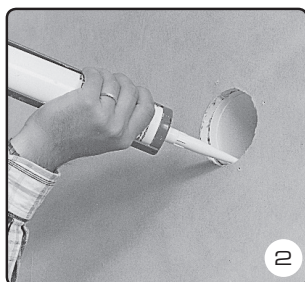
dB-models

The difference when mounting dB-models is that the dB-pipe is cut to the same length as the wall thickness.
At some circumstances the dB-pipe-end can stop within the facade and a standard external grille can be used.



Use a core drill with min. dimension Ø102mm for Fresh 100 and Ø150mm for Fresh 100dB. Drill from inside to outside. Drill the hole so that the pipe slopes slightly downwards.

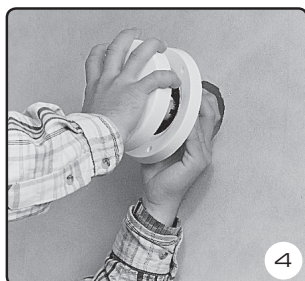
Fresh 100: With wall thickness larger than 360mm, additional telescopic pipe can be used (accessory). If the wall thickness is less than 300mm the pipe can be cut to required length.



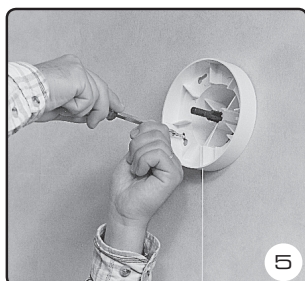
Mount the pipe and seal against the wall, both inside and outside, with for example a sealing agent.



Nail or screw the outside grille into place.



Open the front cover. Press the cover inwards and turn it clockwise. Remove the filter holder and filter.

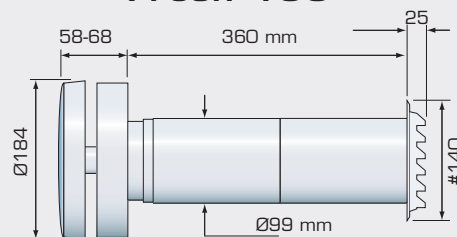


Place the internal part on the wall with 4 screws.



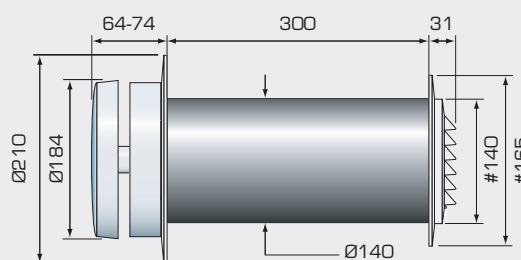
Install the filter and filter holder. Press the cover inwards and turn it anti-clockwise. The vent is now completely installed.

Fresh 100



Maximum wall thickness 360 mm (standard).
Hole-punching Ø102 mm

Fresh 100-dB



Maximum wall thickness 300mm (standard).
Hole-punching Ø150mm.
Internal cover plate #210 as standard.

Placement

As high as possible on the wall, at least 10cm below the ceiling.

Above or in direct connection with a window or a radiator. In connection with floor heating the vent is placed at least 1 m away from the window and should be supplemented with an air-flow director (accessory).

Avoid drilling holes in studs and in proximity to electric wiring and water pipes.

When installing in existing ventilation duct, cover plates #165 or #210mm are available as accessories.

Maintenance

Front cover insulated from condensation and sound penetration.

A calibration screw for infinitely variable adjustment of an air gap, 0-17 mm.

Dust and insect filter supplied as a standard feature. Other filters available as accessories.

The internal part contain a filter which ought to be washed/replaced 1-2 times per year. The Standard filter is washable (use a gentle detergent). The Pollen and Environmental filter should be replaced with a new one. Place the internal part in an open position. Push the vent inwards and turn clockwise. Pull out the front cover and filter holder – the filter is now within reach. The vent should be open and shut at least once every 6 months.

