

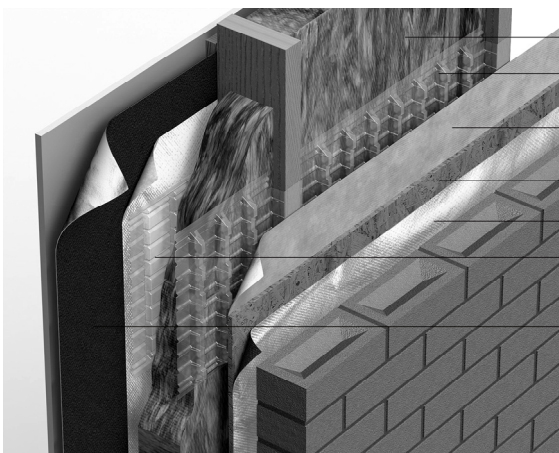
## FIXING INSTRUCTIONS

### PROTECT CAVIT-E TRAY

#### Fixing Protect Cavit-E Tray with Protect TF Interfoil and Fibrous Insulation

- 1 Infill timber studs with a fibrous insulation slab.
- 2 Place three translucent Protect Cavit-E Trays over the insulation top, middle (over joint of two insulation slabs) and bottom between the timber studs and fix by way of stapling. This will create the minimum 20mm air cavity required. If using fibrous insulation in roll form we recommend five trays per stud.
- 3 Roll out Protect TF InterFoil across the frame with the reflective surface facing into the air cavity created by the Protect Cavit-E Trays. Secure the membrane by following the fixing instructions for Protect TF InterFoil.
- 4, Fix OSB board.
- 5 Roll out Protect TF200 Thermo and fix as per Protect TF200 Thermo fixing instructions.
- 6 If required, fix Cavit-E Trays on the inside face of the insulant (warm side) as previously described and roll out TF InterFoil with the reflective surface facing into the air cavity and stapled onto the frame in accordance with the fixing process in (3).
- 7 Fit Protect VC Foil Ultra AVCL ensuring sealed laps with the reflective surface facing into a 25mm service void created by counter battenning. Follow Protect VC Foil Ultra fixing instructions.

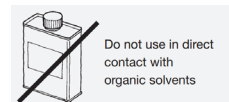
**Alternatively**, the Protect Cavit-E Tray can be used with Protect VC Foil Ultra on the warm side of the insulation stapled directly to the frame with the reflective surface facing into the air cavity created by the Cavit-E Trays. Follow Protect VC Foil Ultra fixing instructions.



- 1 Mineral wool insulation slabs fitted between studs
- 2 Protect Cavit-E Trays fitted at top, middle and bottom of each stud
- 3 Protect TF InterFoil fitted with reflective face into the air cavity
- 4 Fit OSB board
- 5 Fit Protect TF200 Thermo
- 6 If required fit Cavit-E Trays on inside face of insulation followed by TF InterFoil facing into air cavity
- 7 Fit Protect VC Foil Ultra ensuring sealed laps then counterbatten to create service void



**Protect Cavit-E Tray**  
To suit 600mm stud centres but can be cut to suit other sizes.  
Castellated upstands creating circa 20mm air cavity.



For technical advice telephone  
**0161 905 5700**

**Other products that can be used in unison here are: Protect TF InterFoil, Protect VC Foil Ultra, Protect TF200 Thermo, Protect TF200, BarriAir, Protect range of tapes.**

Company names and product descriptions are the Registered Trade Marks of the relevant manufacturer.

**FOR FURTHER INFORMATION ON ALL PROTECT PRODUCTS PLEASE CONTACT:**

.....  
**PROTECT MEMBRANES**  
2 Brooklands Road, Sale, Cheshire, M33 3SS  
Telephone: (+44) 0161 905 5700 Fax: (+44) 0161 905 2085 Web: [www.protectmembranes.com](http://www.protectmembranes.com) Email: [info@protectmembranes.com](mailto:info@protectmembranes.com)



A division of Building Product Design Ltd. Company Registration No: 3944123