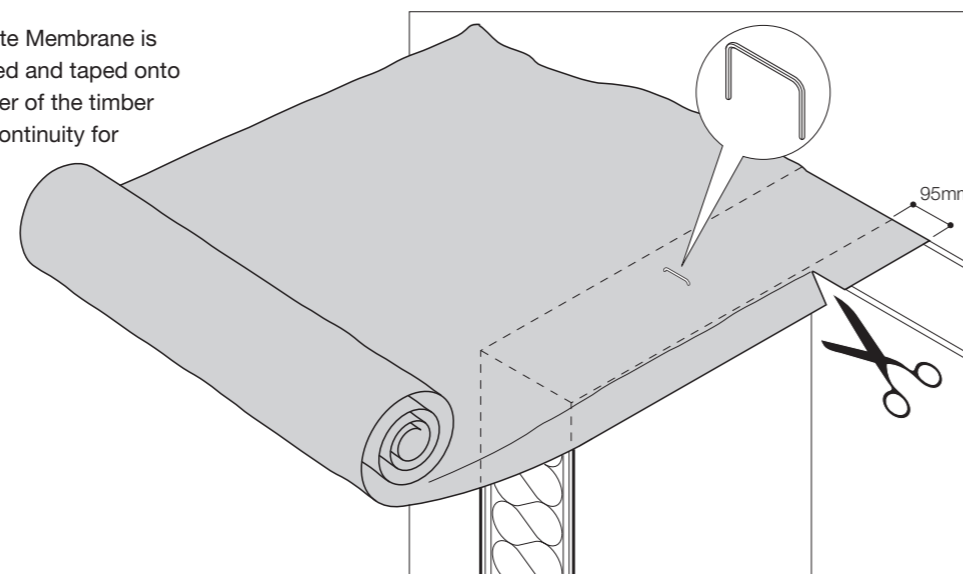


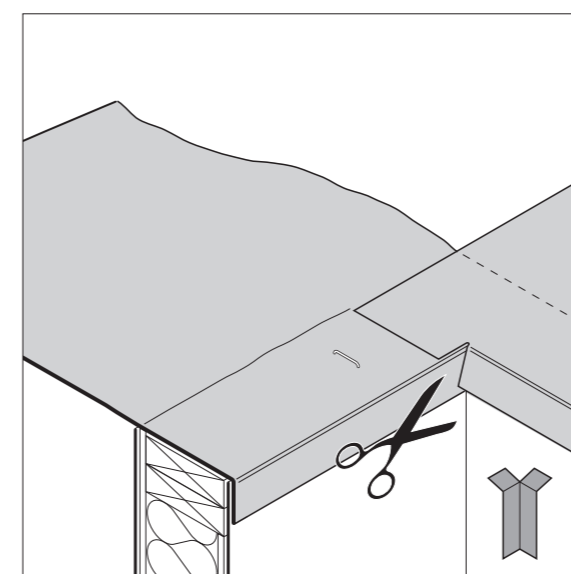
FIXING INSTRUCTIONS - PROTECT FCM750 FLOOR CASSETTE MEMBRANE

Protect Floor Cassette Membrane is designed to be lapped and taped onto the airtightness barrier of the timber frame kit providing continuity for the air barrier line.



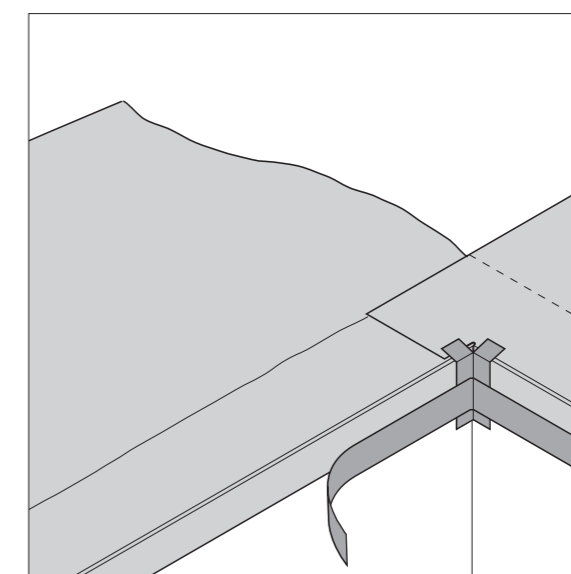
Step 1

Starting at a corner, place the Protect FCM750 membrane on top of the stud wall with approximately 95mm overhang on the inner face of the airtightness barrier membrane. The Protect FCM750 membrane should be flush with the outermost edge of the wall. Staple on top to hold in place. Cut a slit in the membrane at the internal corner and fold the overhang down.



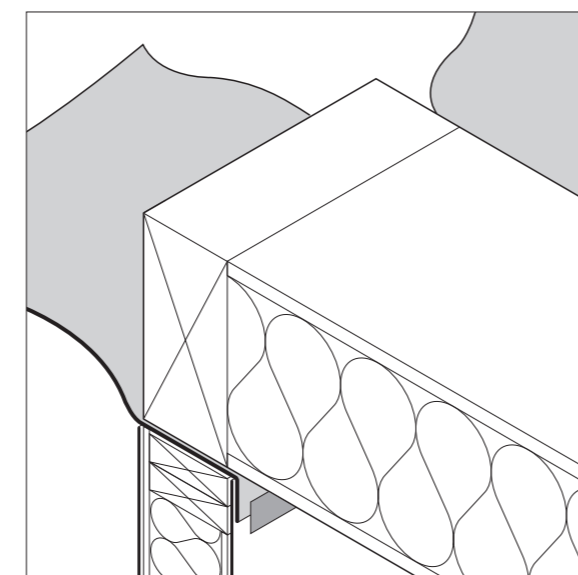
Step 2

Repeat for the adjacent wall and use a short strip of 75mm wide Protect Reveal Tape to seal the vertical joint.



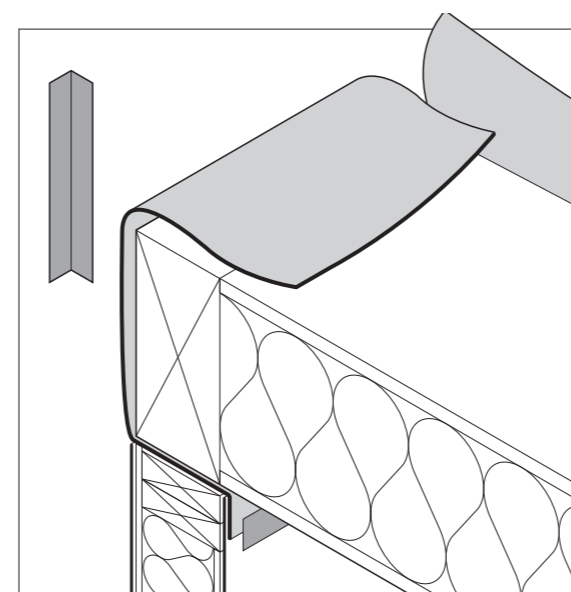
Step 3

Unroll the membrane along the full outer length of the stud panel, cut, staple and tape at the corners as before. Horizontally tape the Protect FCM750 overhang to the airtightness barrier membrane of the wall.



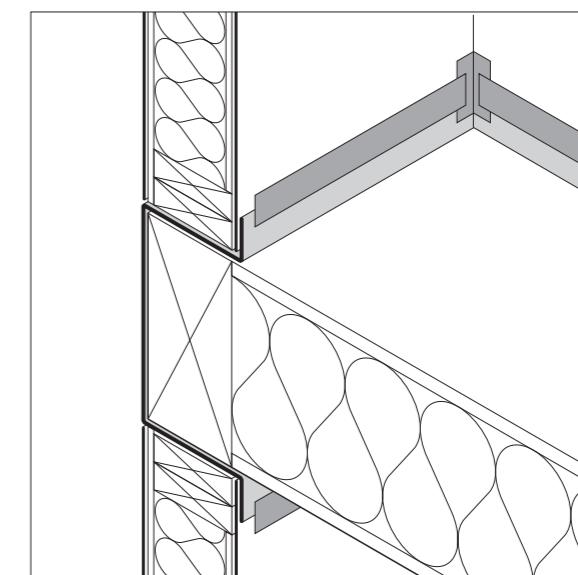
Step 4

Position the floor cassette.



Step 5

Pull the membrane up and fold onto the top of the floor deck. Use a strip of 75mm wide Protect Reveal Tape to seal the vertical joint at each external corner of the floor cassette.



Step 6

When the next wall frames are secured, turn the Protect FCM750 up the inside vertical face of the wall. Slit the membrane vertically at the corners and tape with 75mm wide Protect Reveal Tape. Horizontally tape the turned up Protect FCM750 to the airtightness barrier membrane of the wall.

Other products purchased with this membrane:

CavitE Corner Unit, CavitE Clip, Reflective Single-sided Tape, Reveal Tape, Universal Tape, BarriAir, VC Foil Ultra, VC Tape, Party Wall Air Barrier (PWAB) Pack