

# FIXING INSTRUCTIONS - PROTECT BARRIAIR

## GENERAL

Protect BarriAir must not be exposed to continuous working temperatures in excess of 80°C, such as in direct contact with hot pipes, flues or electric heating cables.

No maintenance of Protect BarriAir is necessary once installed but it is important that the surface of the product remains clean during the installation process.

**Protect BarriAir is for use with walls, ceilings and floors in masonry, metal or timber frame construction on the WARM side of the insulation.**

## WALLS, CEILINGS AND COLD ROOFS

1 Roll out Protect BarriAir to the required length. Starting from the bottom and working upwards horizontally, fix into position either by nailing or stapling to studs or battens.

For metal frame constructions use self tapping screws with washers.

Fixings should be at approx 250mm vertical centres and max 600mm horizontal centres.

Typical installation details are shown in figures 1, 2 & 3.

2 For Protect BarriAir supplied without integral tapes, all **vertical** joints should coincide with battens, metal or wooden studs or metal furrings, and be lapped by at least 100mm and sealed with Protect Reinforced Universal Tape (available separately). All **horizontal** laps should be lapped by at least 100mm and sealed with Protect Reinforced Universal Tape. Protect Double Sided Tape can be used to temporarily fix Protect BarriAir to masonry or metal frame.

For Protect BarriAir supplied with integral tapes, lateral edge overlaps should be at least 100mm. To seal the lap, remove the initial 100mm of release liner from the integrated adhesive layers. Press together firmly and mechanically fix the lapped edge to the substrate. Ensure that the overlapping edges are aligned, and pull both release liners away and press the adhesive surfaces together firmly to ensure a good bond seal. All other joints should be lapped and sealed with Protect Reinforced Universal Tape (available separately - please see Glidevale Protect Lap & Seal Technology brochure for details).

3 Protect BarriAir should be cut and neatly filled around door and window frames, and trimmed and fitted into corners. All junctions should be sealed with Protect Reinforced Universal Tape.

4 If necessary, any holes should be cut neatly into the Protect BarriAir to allow for services such as plumbing and electrical wiring to penetrate and any cuts should be subsequently sealed with Protect Reinforced Universal Tape. Any gaps should also be sealed.

5 Ensure that wood preservatives and damp-proofing treatments are fully dried out before installation of Protect BarriAir. Render or any wet trades should be allowed to dry out before installing Protect BarriAir.

6 When used as an air barrier/vapour control layer the membrane must be fixed on the warm side of the insulation, covering all the internal area, including joists, rafters, rails, studs, noggings, window reveals, lintels and sills. All joints should be lapped by at least 100mm, and sealed in accordance with point 2 above.

7 Ceiling penetrations should be installed in accordance with BS 9250.

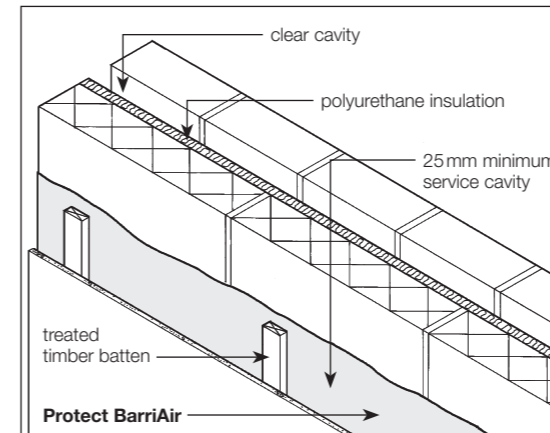


Figure 1. Masonry construction with service cavity.

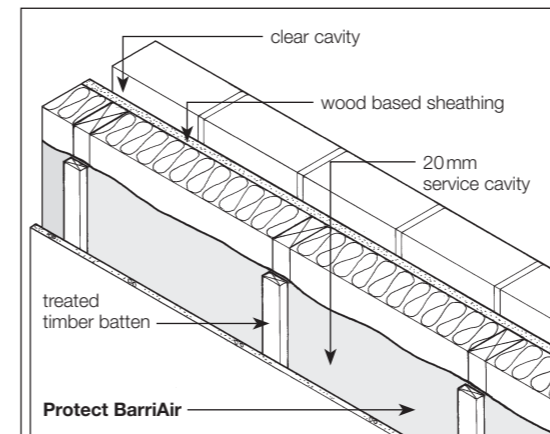


Figure 2. Timber frame construction with service void airspace.



Figure 3. Cold roof construction.

## FLOORS

### Solid floors

Protect BarriAir to be laid over the floor to ensure the total floor area is covered. Joints to be lapped by at least 100mm.

The flooring is then fitted in a conventional manner.

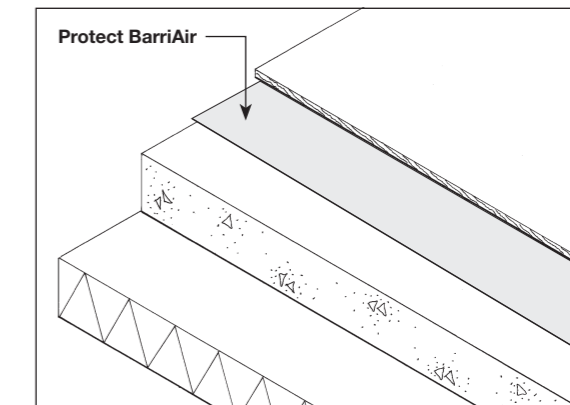


Figure 4

### Suspended floors

Protect BarriAir to be fixed over the floor joists with at least 100mm overlap.

The flooring is then fitted in a conventional manner.

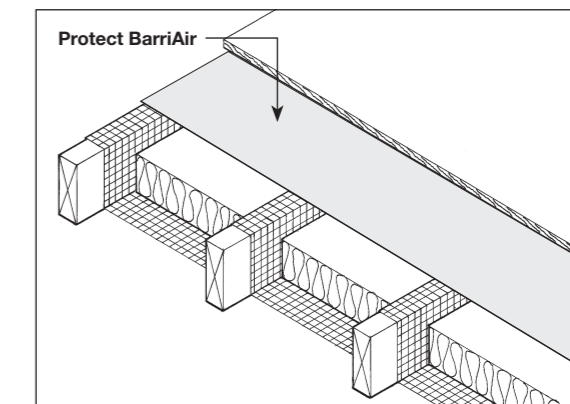
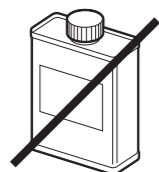


Figure 5

Note: In both applications, thermal bridging should be minimised by turning Protect BarriAir up by 75mm which will be protected by skirting boards or similar. Joints should be lapped by 100mm.



Do not use in direct contact with organic solvents



For technical advice telephone +44 (0)161 905 5700

### Other products purchased with this membrane:

Reflective Single-sided Reinforced Tape, Reveal Tape, Double-sided Tape, Reinforced Universal Tape, VC Foil Ultra, VC Foil Tape, FCM 750 Floor Cassette Membrane.