

FIXING INSTRUCTIONS - PROTECT BARRIAIR

GENERAL

Protect BarriAir must not be exposed to continuous working temperatures in excess of 80°C, such as in direct contact with hot pipes, flues or electric heating cables.

No maintenance of Protect BarriAir is necessary once installed but it is important that the surface of the product remains clean during the installation process.

Protect BarriAir is for use with walls, ceilings and floors in masonry or timber frame construction on the WARM side of the insulation.

WALLS, CEILINGS AND COLD ROOFS

1 Protect BarriAir is rolled out to the required length and starting from the bottom and working upwards, is then fixed into position either by nailing or stapling to timber studs or battens.

For metal frame constructions use self tapping screws with washers.

Fixings should be at approx 250mm centres.

Typical installation details are shown.

2 For Protect BarriAir supplied without integral tapes, all joints should coincide with battens, metal furrings, studs and noggings and be lapped by at least 100mm and sealed with Protect Reinforced Universal Tape, (available separately).

For Protect BarriAir supplied with integral tapes, lateral edge overlaps should be at least 100mm.

To seal lap, remove the initial 100mm of release liner from the integrated adhesive layers.

Press together firmly and mechanically fix the lapped edge to the substrate.

Ensure that the overlapping edges are aligned, and pull both release liners away and press the adhesive surfaces together firmly to ensure good bond seal.

All other joints should be lapped and sealed with Protect Reinforced Universal Tape, (available separately).

3 Protect BarriAir should be cut and neatly filled around door and window frames, and trimmed and fitted into corners. All junctions should be sealed with Protect Reinforced Universal Tape.

4 If necessary, any holes should be cut neatly into the Protect BarriAir to allow for services such as plumbing and electrical wiring to penetrate and any cuts should be subsequently sealed with Protect Reinforced Universal Tape. Any gaps should also be sealed.

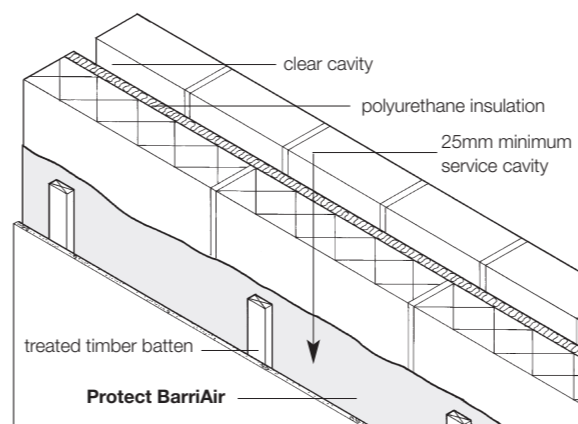
5 Ensure that wood preservatives and damp-proofing treatments are fully dried out before installation of Protect BarriAir.

Render or any wet trades should be allowed to dry out before installing Protect BarriAir.

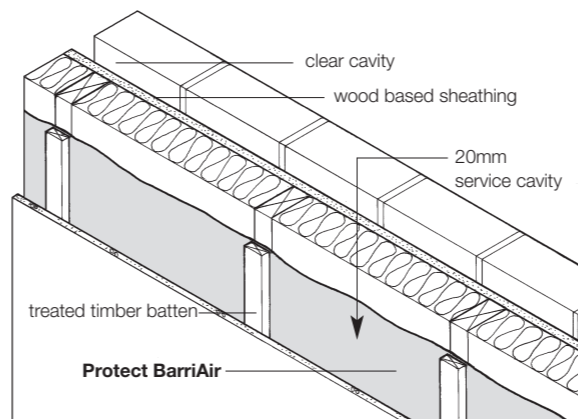
6 When used as an air barrier/vapour control layer the membrane must be fixed on the warm side of the insulation, covering all the internal area, including joists, rafters, rails, studs, noggings, window reveals, lintels and sills. All joints should be lapped 100mm, and sealed in accordance with point 2 above.

7 Ceiling penetrations should be installed in accordance with BS 9250.

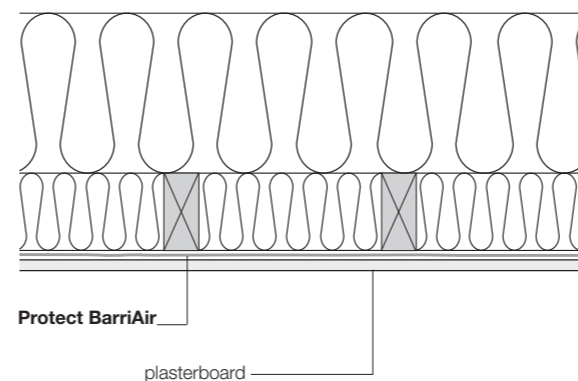
Masonry construction with service cavity.



Timber frame construction with service void airspace.



Cold Roof construction.

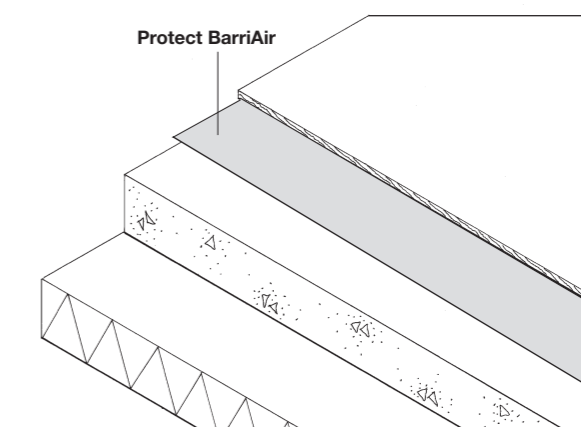


FLOORS

Solid floors

Protect BarriAir to be laid over the floor to ensure the total floor area is covered. Joints to be lapped by a minimum of 100mm.

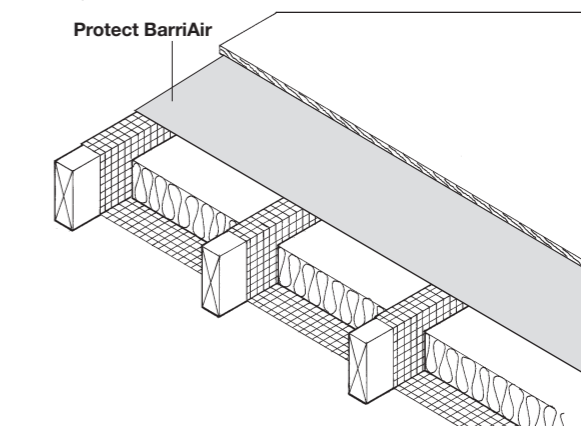
The flooring is then fitted in a conventional manner.



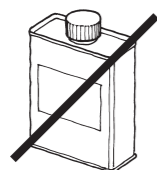
Suspended floors

Protect BarriAir to be fixed over the floor joists with a minimum 100mm overlap.

The flooring is then fitted in a conventional manner.



Note: In both applications, thermal bridging should be minimised by turning Protect BarriAir up by 75mm which will be protected by skirting boards or similar. Joints should be lapped by 100mm.



Do not use in direct contact with organic solvents



For technical advice telephone +44 (0)161 905 5700

Other products purchased with this membrane:

CavitE Corner Unit, CavitE Clip, Reflective Reinforced Tape, Reveal Tape, Reinforced Universal Tape, Double-Sided Tape, VC Foil Ultra, Party Wall Air Barrier (PWAB) Pack and FCM750