

# 5000 FAÇADE

EXTERNAL WALL MEMBRANE FOR USE WITH OPEN CLADDING

**Façades with open rainscreen cladding are a popular architectural feature in modern buildings, and it is important that façade structures designed with openings have a sufficient secondary line of protection with a UV stable wall membrane that can withstand all weather conditions.**

Protect 5000 Façade is a high performance, non-woven vapour permeable membrane featuring a blackened aluminium surface, designed specifically for use in open joint applications on low and medium rise developments below 11 m in height.

Offering strong UV stability, the product has been tested to 5000 hours of accelerated and artificial UV ageing, retaining its Class W1 water penetration resistance. This gives reassurance in specification, providing a temporary, primary line of protection to the external wall during the construction process and a second line of protection against rain penetration after the external façade has been built.

For added confidence in installation, Protect 5000 Façade features integrated tape on the outer edges of the membrane, with adhesive applied on the upper surface of the top edge and also on the lower surface of the bottom edge. This ensures a secure seal by applying the two layers of adhesive to one another, providing more effective adhesion than a traditional overlap tape.



## BENEFITS

- Long-term UV resistance demonstrated by 5000 hours artificial and accelerated aged testing.
- Integral sealing tapes on membrane edges to aid installation.
- Complies with EN 13859-2.
- Resists the passage of water, wind blown snow and dust into the interior of the building.
- Class W1 water penetration resistance, retained after 5000 hours artificial and accelerated aged testing.
- High tear strength, weather resistance and vapour permeability.
- UV and heat stabilised as evidenced by test.
- Suitable for open or ventilated cladding applications.
- Suited to vertical applications with a wide range of materials including timber, metal, clay and stone.
- Excellent nail tear resistance.



# 5000 FAÇADE

EXTERNAL WALL MEMBRANE FOR USE WITH OPEN CLADDING

## Description

Produced in the UK, Protect 5000 Façade is designed for open cladding applications and is installed on the cold side of the insulation. To aid the overall design aesthetic, the membrane does not feature any printed brand logos, just a printed lap line to aid installation.

## Dimensions

Roll size: 1.5 m x 50 m (75 m<sup>2</sup>).  
Roll weight: 15 kg.

## Appearance

A tough non-woven PP spunbond incorporating a unique, durable and high purity blackened aluminium surface, which is bonded to the substrate.

The black surface blends unobtrusively with the structure whilst providing excellent UV resistance. The surface is then micro-perforated and further protected by a waterproof vapour permeable layer of microporous film.

Each membrane overlap can be sealed for maximum weathertightness through the use of integral sealing tapes on both edges of the membrane.

## Compatibility

As with all non-woven spunbond materials, do not lay in direct contact with undried timber preservatives (whether water or solvent based).

## UV Testing

Protect 5000 Façade has been subjected to artificial and accelerated UV ageing for 5000 hours in accordance with EN 13859-2 Flexible sheets for waterproofing – Underlay for walls.

For more information visit  
[glidevaleprotect.com/5000facade](http://glidevaleprotect.com/5000facade)

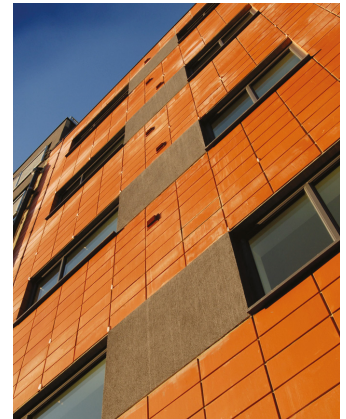
PERFORMANCE TO BS EN 13859-2:2010		
	MD	CD
Nail tear strength (N) to BS EN 12310-1 modified to BS EN 13859-2	175	215
Tensile strength to EN 12311-1 modified to BS EN 13859-2		
Unaged tensile strength (N/50 mm)	200	200
Aged tensile strength after 5000 hours of artificial and accelerated UV ageing (N/50 mm)	180	195
Weight (g/m <sup>2</sup> ) to BS EN 1849-2	180	
Flexibility at low temperature to BS EN 1109	-40°C	
Water vapour resistance to BS EN ISO 12572	≤0.55 MNs/g / ≤0.11 Sd(m)	
Resistance to water penetration to BS EN 13111	Pass Class W1	
Aged resistance to water penetration after 5000 hours of artificial and accelerated UV ageing	Pass Class W1	

MD = Machine Direction (along roll). CD = Cross Direction (across roll).  
UV and heat ageing conditions: UVA lamps at 50°C for 5000 hours followed by heat ageing at 70°C for 90 days.

## Specification clause:

Vapour permeable wall membrane to be Protect 5000 Façade supplied by Glidevale Protect, 2 Brooklands Road, Sale, Cheshire, M33 3SS.  
T: +44 (0)161 905 5700  
F: +44 (0)161 905 2085  
E: [info@glidevaleprotect.com](mailto:info@glidevaleprotect.com)

Wall membrane to be a five layer construction comprising a waterproof and vapour permeable core, two layers of polypropylene spunbond with the upper layer bonded to a durable, perforated and solid blackened aluminium. The product should have a weight of 180g/m<sup>2</sup> and be suitable for installation into low and medium rise structures with open joint façade cladding below 11 m in height. Membrane should achieve a water resistance of Class W1 (aged) and a vapour resistance of <0.55 MNs/g / <0.11 Sd(m) to BS EN ISO 12572. Product to be tested for 5000 hours of artificial and accelerated UVA in accordance with BS EN 13859-2. The product should feature integrated tape on the outer edges to aid installation. External wall breather membrane to be fitted onto the external side of frame in accordance with manufacturer's instructions.



## Related products

Protect FrameSafe 5000 FR - A2 fire rated external wall membrane: [glidevaleprotect.com/framesafe5000](http://glidevaleprotect.com/framesafe5000)

Protect BarriAir - airtightness membrane with vapour control properties: [glidevaleprotect.com/barriair](http://glidevaleprotect.com/barriair)



Glidevale Protect, 2 Brooklands Road, Sale, Cheshire, M33 3SS

T: +44 (0)161 905 5700 F: +44 (0)161 905 2085

[info@glidevaleprotect.com](mailto:info@glidevaleprotect.com)

[Glidevale Protect](#)

[glidevaleprotect.com](http://glidevaleprotect.com)

**glidevale**  
**protect**

Glidevale Protect maintains a policy of continuous development and reserves the right to amend product specifications without notice. The company is a division of Building Product Design Ltd. Company registration 3944123. Printed on sustainably sourced paper.

CI/SfB Ly  
Uniclass Pr\_25\_57\_10\_68

